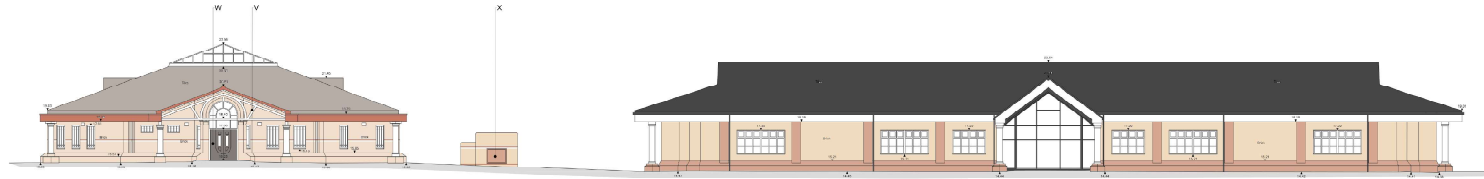
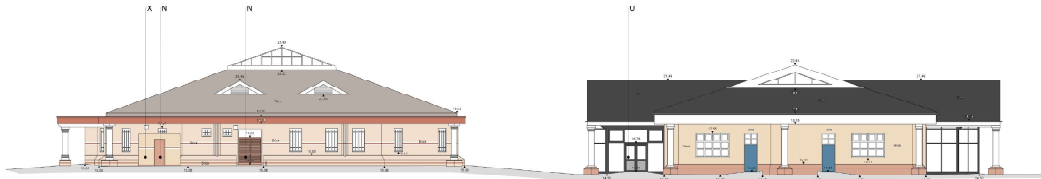


This drawing should not be scaled.  
All dimensions must be checked on site and contractor to report any omissions or errors to the contract administrator

KEY	
A	Dark grey flat roof
B	Dark red polished brickwork
C	Clay tile
D	Dark grey PVC membrane ground
E	White GRC beam piling
F	Red brick protruding window brick detailing end beam piling
G	Paintwork
H	Steel columns with white GRC Uroc-style casing on red brick base
I	White board finish
J	Dark grey aluminium framed curtain walling
K	Dark red roof
L	Red fascia board
M	White aluminium framed glazing
N	Red metal cladding
O	System perimeter any light
P	Red UVC membrane ground
Q	Light grey stone roof
R	Lighter red brick spine base with red banding detail
S	Lighter red brick with red and gold white brick banding detail
T	Other columns with white GRC Uroc-style casing on half brick base with red brick band detail
U	Flavour finish doors with aluminium work frame
V	Exposed brick pattern base and brick finish
W	Grey metal double doors
X	Dark red brick spine base with red brick band detail and red metal cladding



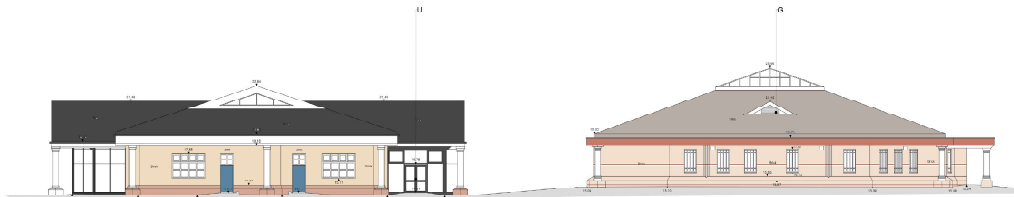
EXISTING WEST ELEVATION  
1:200 @ A1



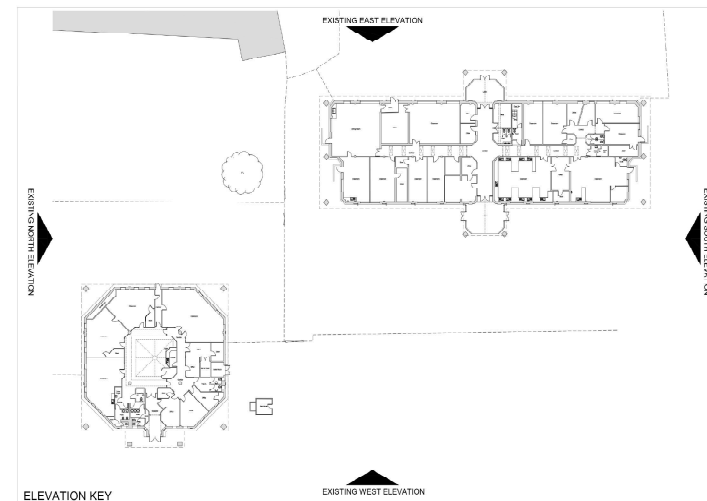
EXISTING SOUTH ELEVATION  
1:200 @ A1



EXISTING EAST ELEVATION  
1:200 @ A1



EXISTING NORTH ELEVATION  
1:200 @ A1



P01	PLANNING SUBMISSION	28/10/21
P03	DRAWINGS REORDERED ON SHEET	08/10/21
P02	PRE-APP SUBMISSION	05/10/21
P01	FIRST PRELIMINARY ISSUE	07/07/21

Rev	Drawn/Checked	Dim	Crk	Date
0				

Drawing Status:  PRELIMINARY  APPROVAL  INFORMATION  TENDER  CONSTRUCTION

**Stockton-on-Tees**  
BOROUGH COUNCIL

Community Services and Transport  
17 Old Billingham Way, Billingham, 1522 2YL  
Tel: 01642 330000  
Email: planning@stocktononteesboroughcouncil.gov.uk

Project:  
**Bishopston Pupil Referral Unit**  
Marsh House Avenue, Billingham

Content:  
**Existing Elevations**

Date	May 2021	Dwg No.	A10977 / 10 - 04
Drawn	MR	Checked	DA
Scale	@ A1	Scale	1:200
Rev		Rev	P04